



Structural Analysis & Design Software

www.dlubal.com



Jasmin Hartung
Organizer

Marketing & Public Relations
Dlubal Software GmbH



Dipl.-Ing. (FH) Gerhard Rehm
Co-Organizer

Customer Support & Product Engineering
Dlubal Software GmbH

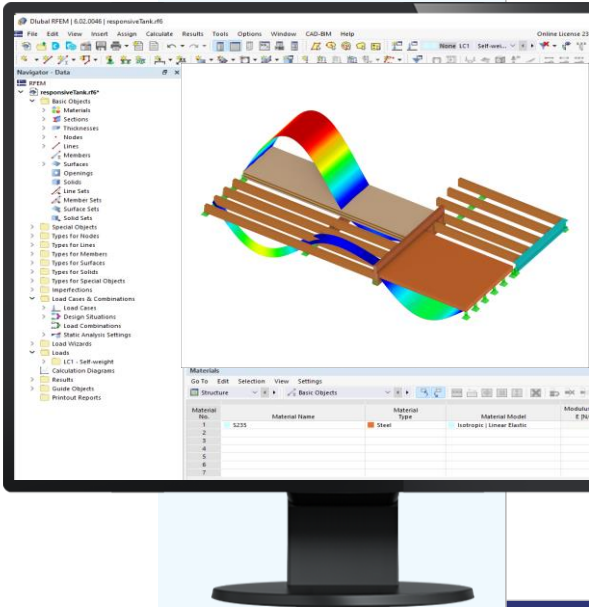


Dipl.-Ing. (BA) Markus Baumgärtel
Co-Organizer

Customer Support
Dlubal Software GmbH

Webinar

Member and Surface Design of Timber Components in RFEM 6



Questions During the Presentation



GoToWebinar Control Panel
Desktop



E-mail: info@dlubal.com



Show or hide control panel



The screenshot shows the GoToWebinar control panel interface. At the top, there is a menu bar with 'File', 'View', and 'Help'. Below it is the 'Audio' section, which includes a 'Sound Check' indicator with a green bar and a question mark. There are two radio buttons: 'Computer audio' (selected) and 'Phone call'. A red 'MUTED' indicator is visible. Below this, there are dropdown menus for 'Mikrofon (2- Sennheiser USB h...)' and 'Lautsprecher (2- Sennheiser U...'. A volume slider is also present. The 'Questions' section is below the audio settings, featuring a text input field with the placeholder '[Enter a question for staff]' and a 'Send' button. At the bottom, the 'Webinar ID: 373-901-987' and the 'GoToWebinar' logo are displayed.



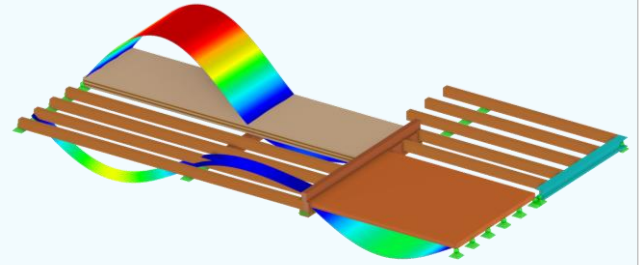
Adjust audio settings

Ask questions



CONTENTS

- 01 Modeling a timber floor slab considering different model variants**
- 02 Presentation of new features for timber design**
- 03 Floor slab design according to Eurocode 5 including load transfer to other model**
- 04 Outlook on further development and new features**



Future Features in Timber Design Add-On

- Fire resistance design for initially protected or unprotected surfaces
- Design of profiled cross-sections (Massiv I) for SIA 265
- Extension of design supports (tapers, notches...)
- Increase of shear resistance according to DIN EN NDP Zu 6.1.7(2)
- Considering flexibilities in „rigid links“

Materialkennwerte				C24 BBS SYS Binderholz (EU)
☐ Layereigenschaften				
☐ Lasteinwirkungsdauer und Nutzungsklasse				
☐ Parameter für Brandbemessung				
Dauer der Brandbeanspruchung	t	30 min		
Koeffizient	k _{fi}	1.15 --		EN 1995-1-2, 2.3(3), Tab. ...
Teilsicherheitsbeiwert für Holz im Brand	γ _{M,fi}	1.00 --		EN 1995-1-2, 2.3(1)
Brandbeanspruchte Seten		+z		
☐ Abbrandtiefe				
Flächendicke	h	120.0 mm		
☐ Schicht Nr. 1				
☐ Schicht Nr. 2				
☐ Schicht Nr. 3				
☐ Schicht Nr. 4 Reduziert				
☐ Schicht Nr. 5 Abgebrannt				
Schichtdicke	d	30.0 mm		
Bemessungswert der Abbrandrate für eindimensiona...	β ₀	0.90 mm/min		EN 1995-1-2, 3.4.2, Tab. 3.1
Charakteristische Dichte	ρ _k	350.00 kg/m ³		
Brandfaktor der Plattendichte	k _p	1.13 --		EN 1995-1-2, 3.4.2(9), Gl. ...
Bemessungswert der Abbrandrate für Holzwerkstoff...	β _{0,pt}	1.02 mm/min		EN 1995-1-2, 3.4.2(9), Gl. ...
☐ Abbrand von der Unterseite				
Anfangszeitpunkt des Schichtabbrands	t _{start}	0 min		
Abbrandtiefe für eindimensionalen Abbrand	d _{char,0}	30.0 mm		
Effektive Abbrandtiefe	d _{ef}	30.0 mm		EN 1995-1-2, 4.2.2
Endzeitpunkt des Schichtabbrands	t _{end}	29 min		
Dicke zum Vernachlässigen der durch Brand reduziert...	d _m	3.0 mm		
Restdicke der Schicht	d _{fi}	0.0 mm	≤ d _m !	
Restdicke der Fläche	h _{fi}	81.8 mm		
☐ Bemessungsspannungen der Holzfläche				
☐ Bemessungswerte				



— Book your free Online Appointment!

Get valuable insights from one of our experts



**Dipl.-Ing. (FH) Dipl.-
WirtschaftsIng. (FH)
Christian Stautner**

Head of Sales



Bastian Ackermann, M.Sc.

Sales



Daniel Dlupal, M.Sc.

COO of Dlupal Software GmbH



**Dipl.-Ing. (FH) Michael
Hansen**

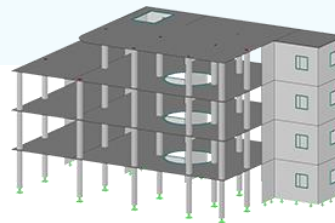
Sales & Marketing



→ Contact Our Sales Team

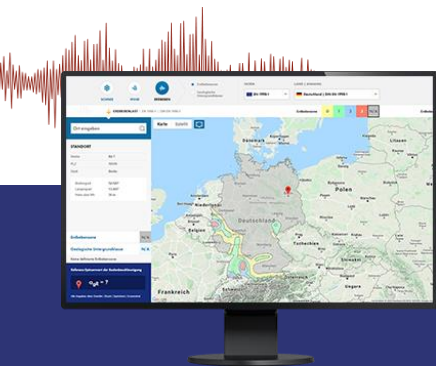


Free Online Services



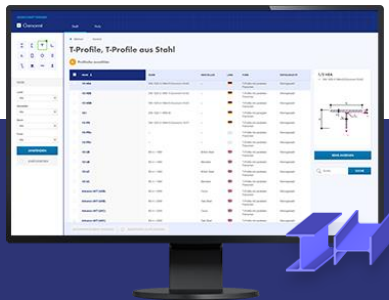
Geo-Zone Tool

Dlubal Software provides an online tool with snow, wind and seismic zone maps.



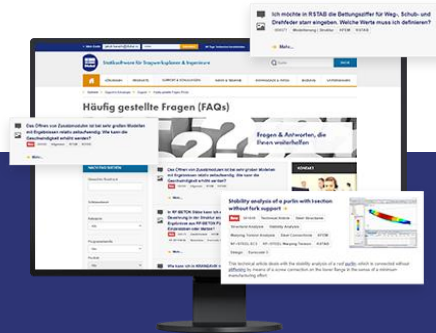
Cross-Section Properties

With this free online tool, you can select standardized sections from an extensive section library, define parametrized cross-sections and calculate its cross-section properties.



FAQs & Knowledge Base

Access frequently asked questions commonly submitted to our customer support team and view helpful tips and tricks articles to improve your work.



Models to Download

Download numerous example files here that will help you to get started and become familiar with the Dlubal programs.

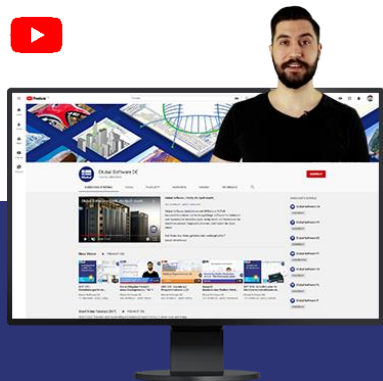




Free Online Services

Youtube Channel - Webinars, Videos

Videos and webinars about the structural engineering software.



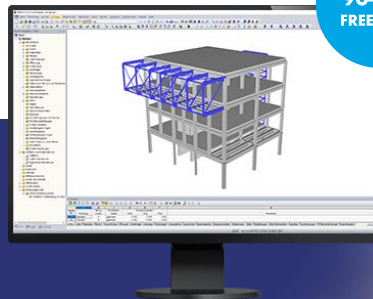
Webshop with Prices

Configure your individual program package and get all prices online!



Trial Licenses

The best way how to learn using our programs is to simply test them for yourself. Download a 90-day free trial version of our structural analysis & design software.



We offer free support via email and chat



— Get Further Details About Dlubal



Visit website
www.dlubal.com

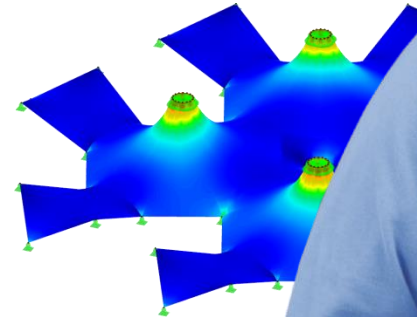
- Videos and recorded webinars
- Newsletters
- Events and conferences
- Knowledge Base articles



See Dlubal Software in action in a webinar



Download free trial license



Dlubal Software GmbH
Am Zellweg 2,
93464 Tiefenbach, Germany

Phone: +49 9673 9203-0
E-mail: info@dlubal.com



www.dlubal.com